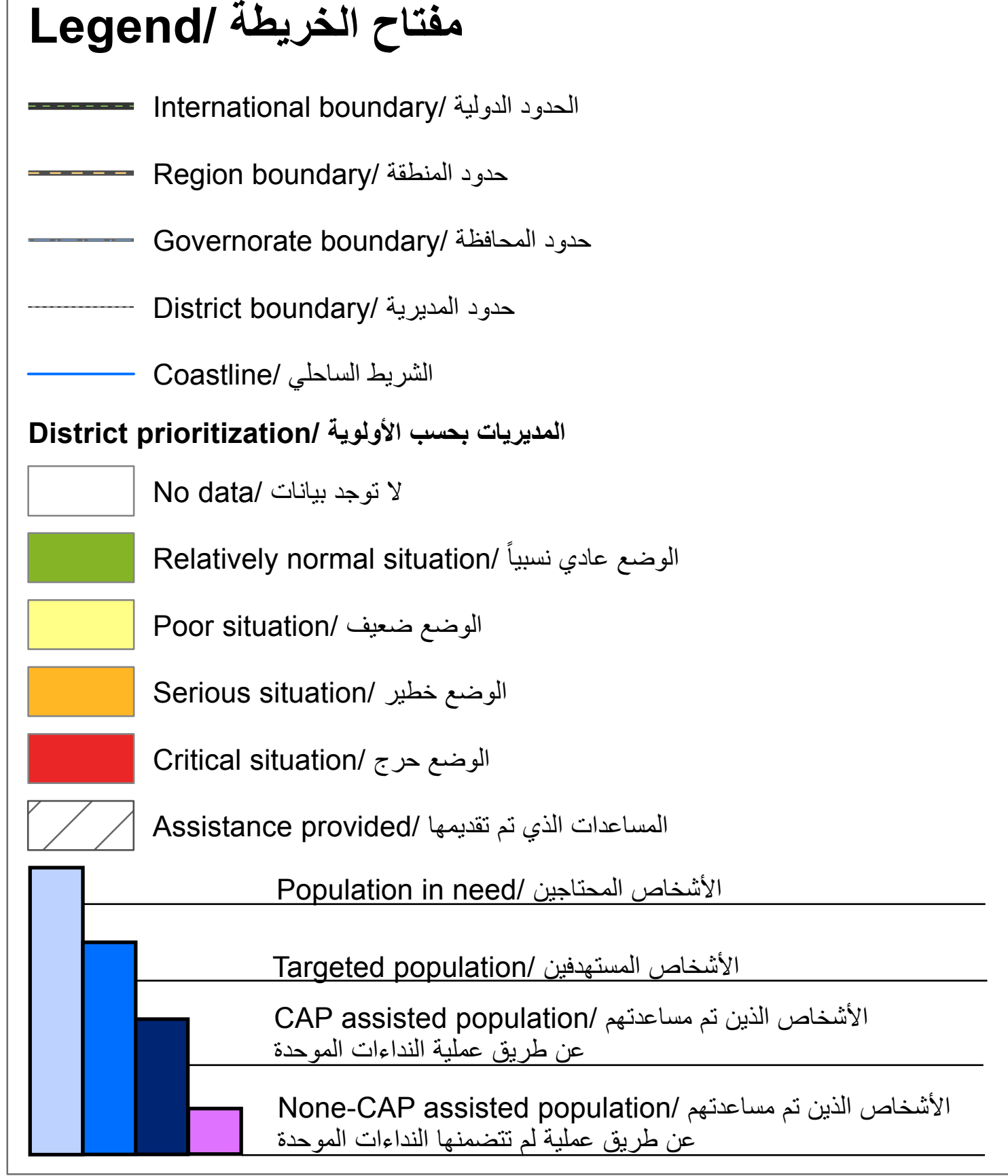
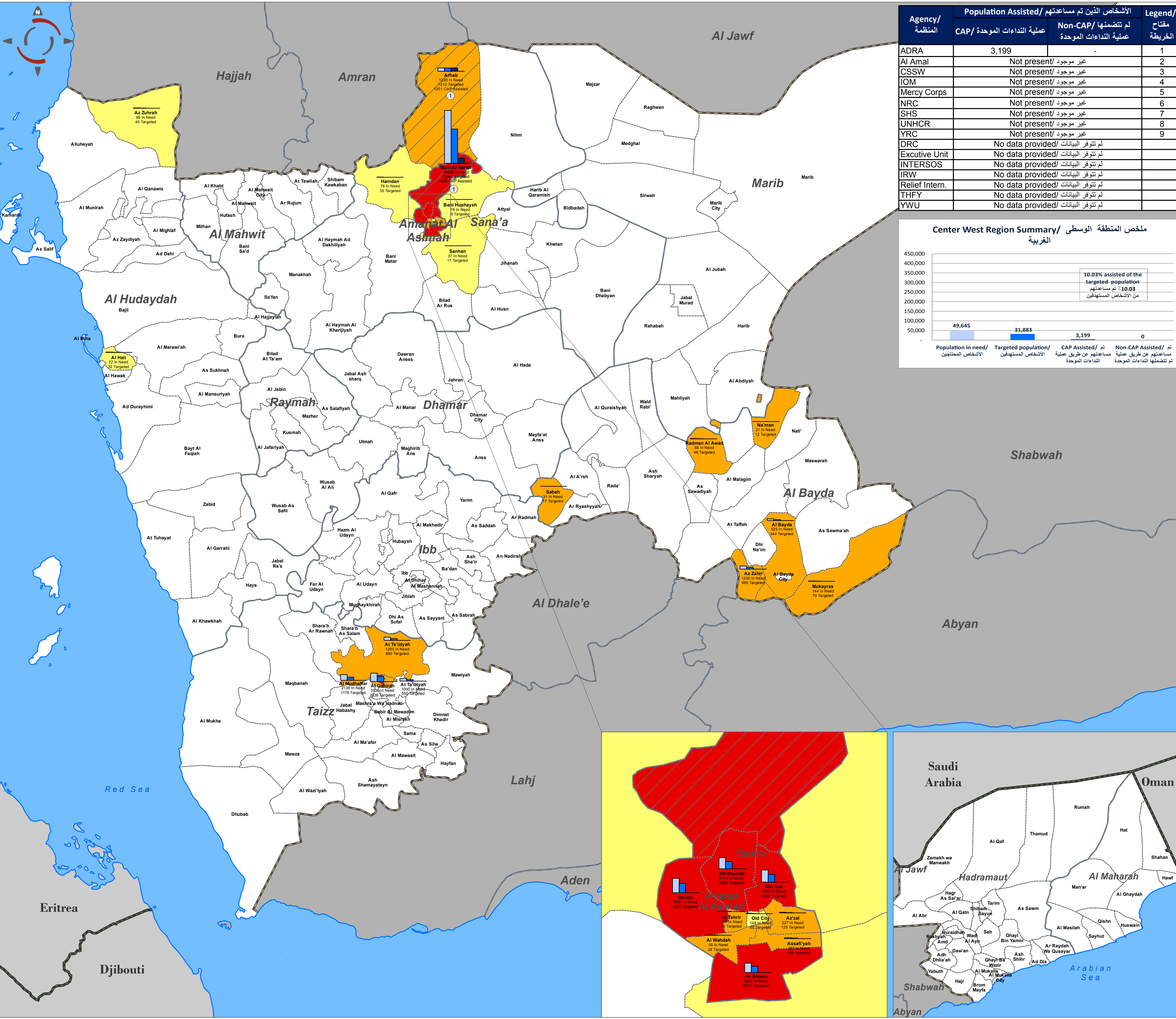
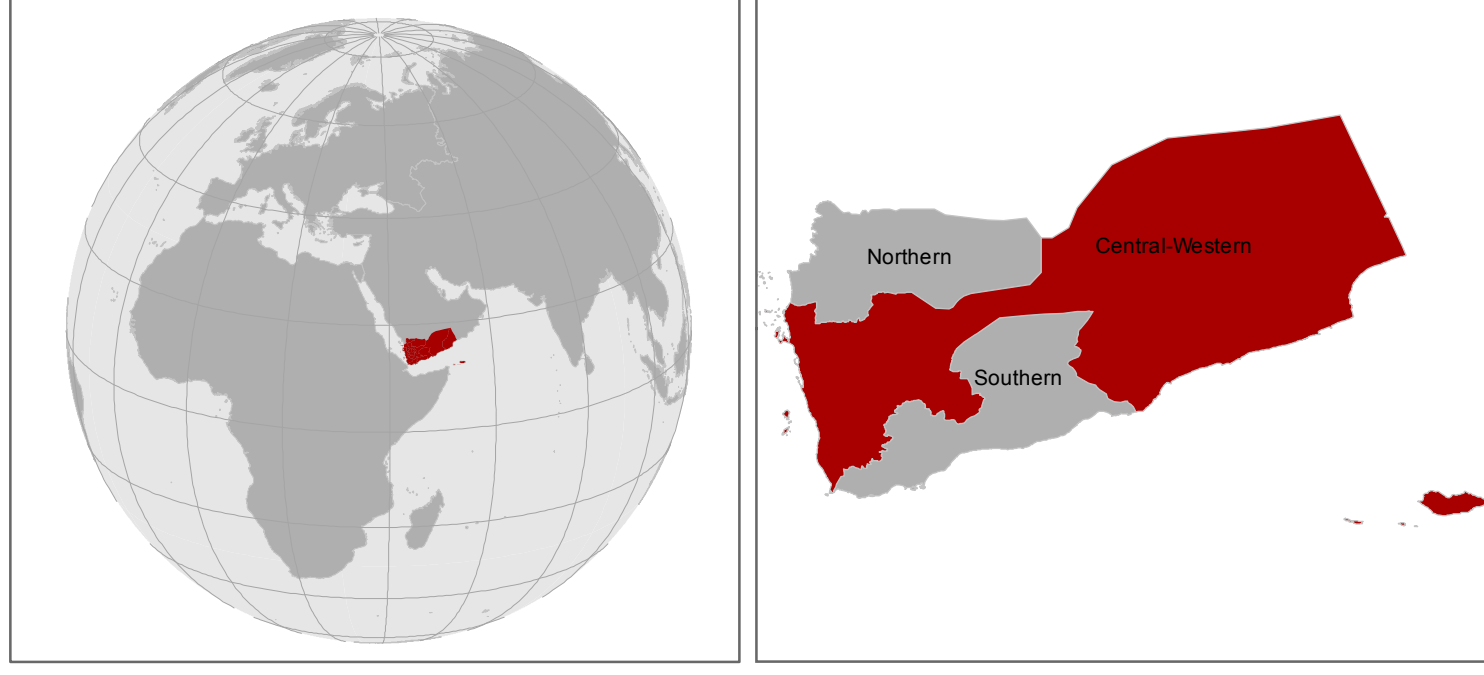
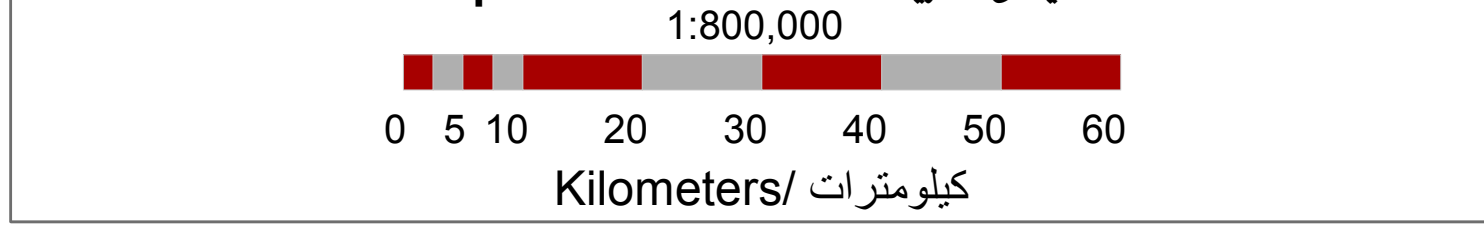


Yemen - Center West Region - District Priority - People in Need, Target and Assisted - Shelter/CCCM/NFI Cluster - 15 February 2013

اليمن - المنطقة الوسطى الغربية - المديرية حسب الأولوية - الأشخاص المحتاجين، المستهدفين، الذين تم مساعدتهم - كتلة المأوى\تنسيق وأدارة المخيمات\المواد الايوائية - 15 فبراير 2013



Sources:
District prioritization: Shelter/CCCM/NFI Cluster district prioritization had been defined based on cluster assessments reports and UNHCR's IDPs and returnees statistics reports for April 2012 and August 2012 (per district), using the following four cluster indicators:
1. No. of persons in need for Shelter assistance (i.e. Emergency Shelter, Transitional/upgrading Shelter, Long-term/permanent Shelter, Shelter Grants and etc.) weighted as (1) < 100 as relatively normal (2) > 300 as poor (3) < 500 or Yes (Yes represents areas with shelter needs) as serious (4) ≥ 500 as critical.
2. No. of persons in need for NFIs weighted as (1) < 100 as relatively normal (2) < 300 as poor (3) < 500 or Yes (Yes represents areas with NFI needs) as serious (4) ≥ 500 as critical.
3. No. of IDPs inside camps/collective centers/outside camps weighted as (1) No (No Returnees statistics or not a potential area for return) as no data (2) Yes (Returnees statistics or a potential area for return) as critical.
4. No. of Returnees and potential areas for return weighted as (1) No (No Returnees statistics or not a potential area for return) as no data (2) Yes (Returnees statistics or a potential area for return) as critical.
Each district is given a composite score from 0 to 4 based on evidence collected for each indicator, and the grand total of all indicators are divided by 3 (IDPs and returnees indicators counted as 1 for this purpose). As a result, a ranking of 1 to 4 has been assigned to each district. Districts with no data represent locations where no reliable information and no assessment had been conducted.
Population in need: CAP 2013.
Targeted population: CAP 2013.
Assisted population: Information collected in January 2013 via the Shelter/CCCM/NFI Cluster SRF.
Cartography: GoY / CSO.



برنامج إدارة المعلومات 15 فبراير 2013

هذه الخريطة تستخدم لأغراض التخطيط فقط. لا ينبغي استخدامها لأغراض الملاحة. برنامج إدارة المعلومات لا يتحمل المسؤولية عن أي أضرار أو إصابات ناجمة عن استخدام هذه الخريطة. الحدود الإدارية المبينة على هذه الخريطة لا تدل على أية مصادقة عليها من قبل برنامج إدارة المعلومات أو أي من شركائنا.

www.immap.org

Contact/ الاتصال بنا على: yemen@immap.org